

S

M

L

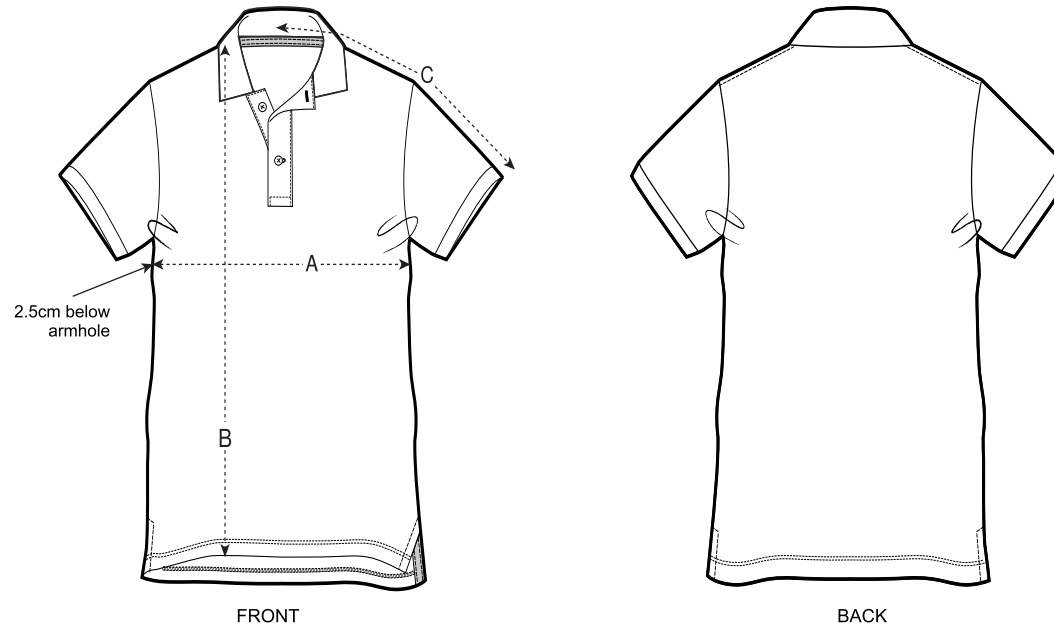
XL

XXL

XXXL

Size guide

*Centimeters



SIZES		S	M	L	XL	XXL	XXXL
A	Half Chest	50.2	53.3	55.9	59.7	62.2	66
B	Body Length	70.5	73.7	77.4	81.2	84.4	87.6
C	Sleeve Length	43.8	46.3	48.9	51.4	53.9	56.5